

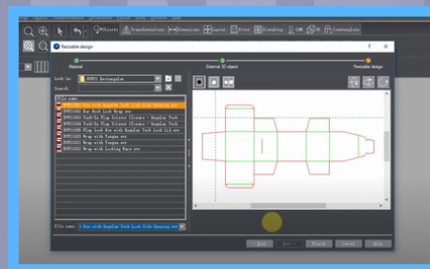
# INFRASTRUCTURE

We have state of art manufacturing facility in the **Barhi Industrial Estate of Haryana**. Being equipped with the latest and modern technologies in our printing and finishing application, we have a total capacity of **3 million playing cards per month** and growing.

We have a total capacity of a **million monocarton** and **printed corrugated boxes per day**.

We pay special attention to the enhancement of our various print applications to achieve excellence and increase our production capacity. We will continue to invest and expand our infrastructure to provide exceptional services to our customers.

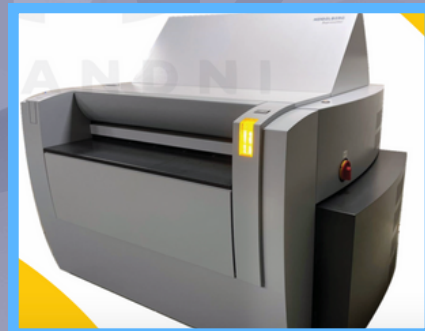
## PRE-PRESS



*Prinect- Completely Heidelberg Work flow*



**EPSON PRINTER**



**Supraletter**

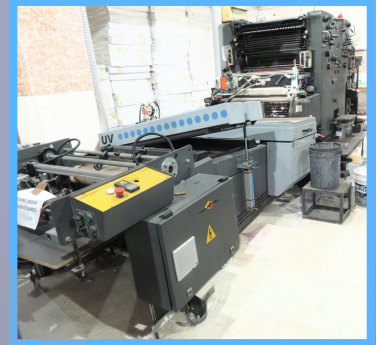
## **PRESS**



**SM 74 four colour + coater**



**SM-74 ( 4 Color) Heidelberg**



**SM 72 for drip off**

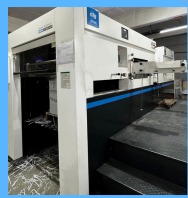
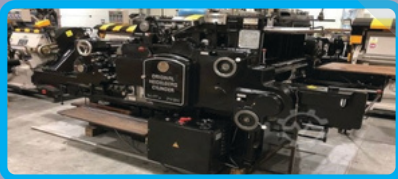


**3 Automatic UV Coating machine ( Alpana)**



## **POST PRESS**

- Yongshun automatic dry lamination machine
- Robus automatic dye cutting
- DGM Smartfold Gluer Pasting machine Heidelberg
- Complete corrugation machinery for b,e,g flute
- Hanglon flute pasting machine
- Automatic window patching
- Cylinder dye cutting and manual dye cutting Heidelberg







# EXPERTISE

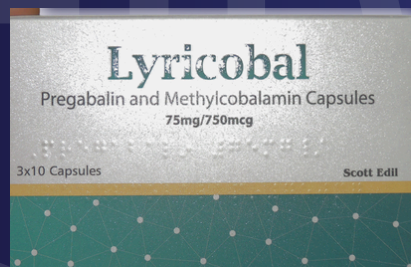


## PRINTING PROCESS

CONVENTIONAL AND  
UV OFFSET

## VALUE ADDITIONS

HOT FOIL STAMPING,  
SCREEN PRINTING,  
WINDOW PATCHING,  
DRIP OFF UV,  
IMBOSING





## **SURFACE APPLICATIONS**

**AQUEOUS VARNISH, UV  
VARNISH, BLISTER  
COATING LAMINATION  
TRANSPARENT &  
METALLISED (INCLUDING  
HOLOGRAPHIC)**



## **FINISHES APPLICATIONS**

**DIE CUTTING AND BOX  
FINISHING FOR MONO  
CARTON AND E,F FLUTE-  
2PLY, 3PLY AND 5PLY**

